

Project Background

Describe research aims and objectives



Describe the target population of interest



Specify study design

Observation Units & Variables



Describe sources of data (*electronic health records, surveys, other data collections*)

Define all variables and their roles:
 X_1, X_2, X_3, \dots

Specify eligibility criteria with information available at baseline



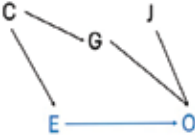
Main Data Analysis Plan (MDA)

Analysis method for each research objective

- Which variables are included and how?
- Analysis population and sample size



Assumptions and diagnostics



Software: analyses, visualizations, data management, data archiving



Initial Data Analysis Plan (IDA)

Data preparation (*linking datasets, variables related to time, new variables*)

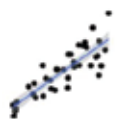
Missing data (n, %)

Histogram

Univariable distributions



Scatter plot



Multivariable distributions



Statistical Analysis Plan



STATS

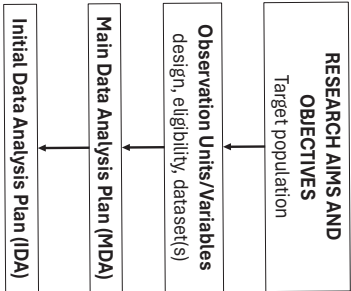
CSTAT
Center for Statistical
Training & Consulting



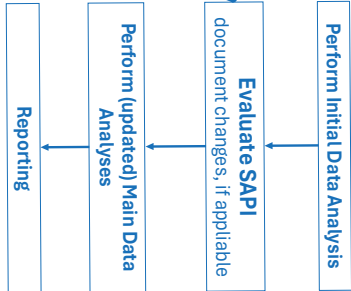
Marianne Huebner
2025-05-28



1 2 3 4 5 6



Step 1: Developing a SAPI



Step 2: Implementing a SAPI



Names and contacts
researchers, analysts,
oversight committee

Ethical approval



Where are the
protocol, data
management plan,
data dictionary

Administrative Info